

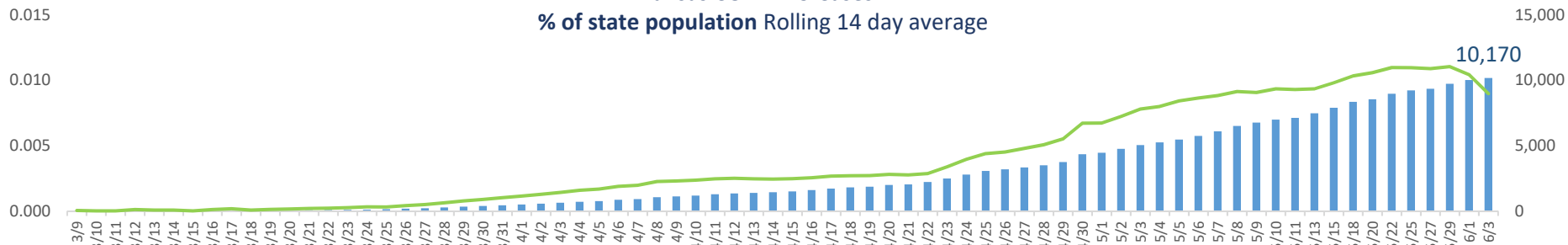


COVID-19 SITUATIONAL AWARENESS UPDATE

Updated June 3, 2020

Kansas Hospital Association

Kansas COVID-19 Cases -
% of state population Rolling 14 day average



Kansas Hospital Summary – EMResource¹

COVID Inpatients (IP)	NC	NE	NW	SC	SE	SW	KC KS
COVID positive IPs	0	7	0	10	0	21	13
COVID - patients in ICU	0	3	0	4	0	8	
COVID patients on ventilator	2	2	0	2	0	1	2
IPs awaiting COVID lab result	3	33	1	12	1	4	3
Ventilators - Available	10	129	51	145	31	47	10
Bed Availability							
Adult ICU	9	58	20	79	20	12	26
ED	45	149	61	248	58	54	112
Med/Surg	152	320	212	473	163	234	119
Negative Flow	22	100	55	132	25	51	5

Notes:

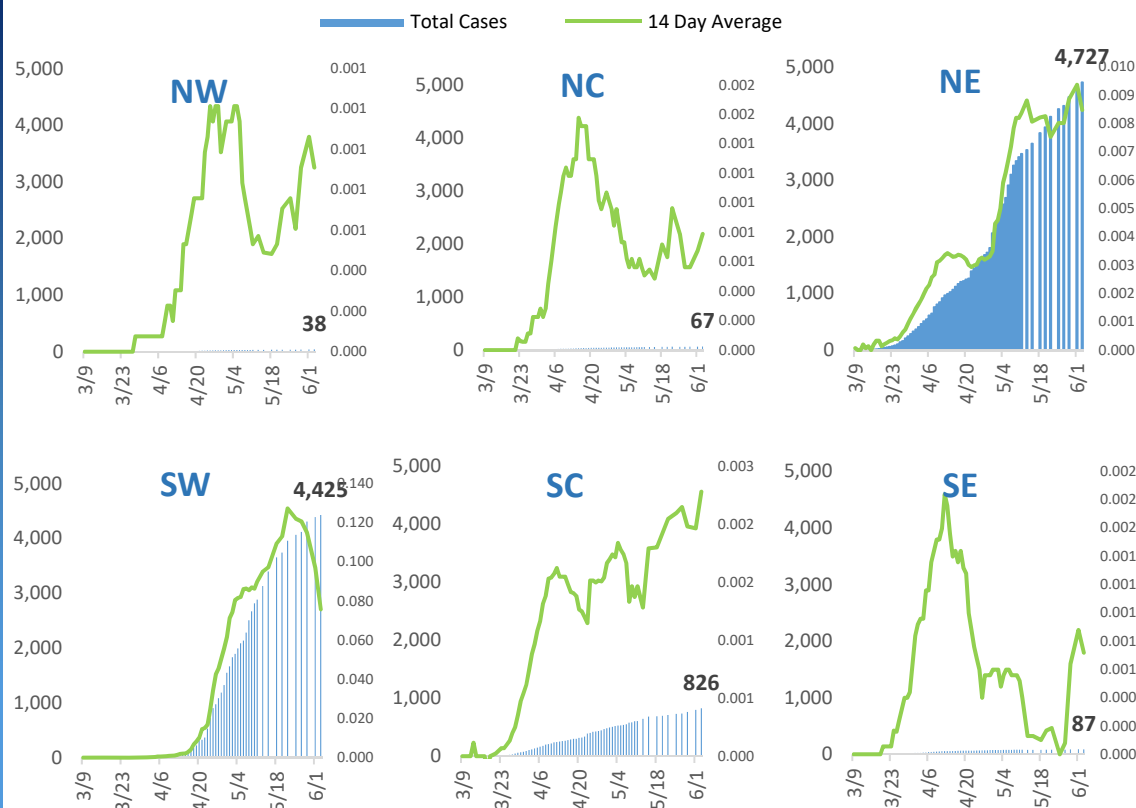
- 1.EMResource data updated daily – published here MWF
- 2.KDHE data updated Monday, Wednesday and Friday
<https://www.coronavirus.kdheks.gov/160/COVID-19-in-Kansas>
- 3.Combined KDHE COVID data and US Census Data

Please direct questions regarding this dashboard to [Sally Othmer](#)

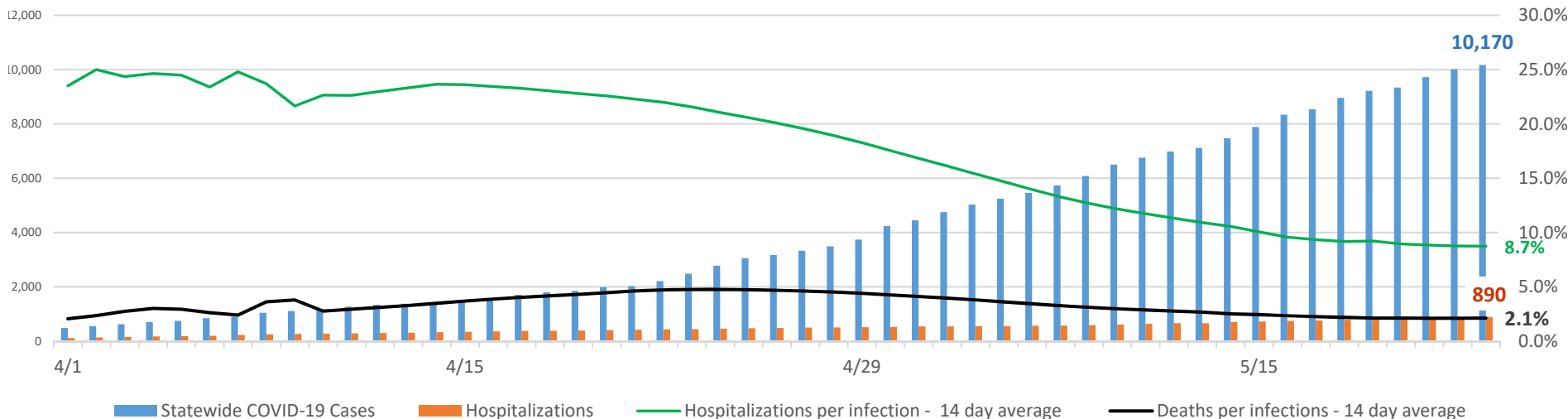
*A case is defined by a person who tested positive for the novel coronavirus (SARs-CoV-s), which causes Coronavirus Disease 2019 (COVID-19). Confirmed and probable cases are reported in this dashboard. A probable case is defined as a person with a) presumptive lab evidence (serology) with COVID-19 symptoms or epi-linked to a confirmed case, or b) no lab testing with COVID-19 symptoms and epi-linked to a confirmed case. - .Last updated: 6/3/2020

COVID-19 Cases By KHA Region

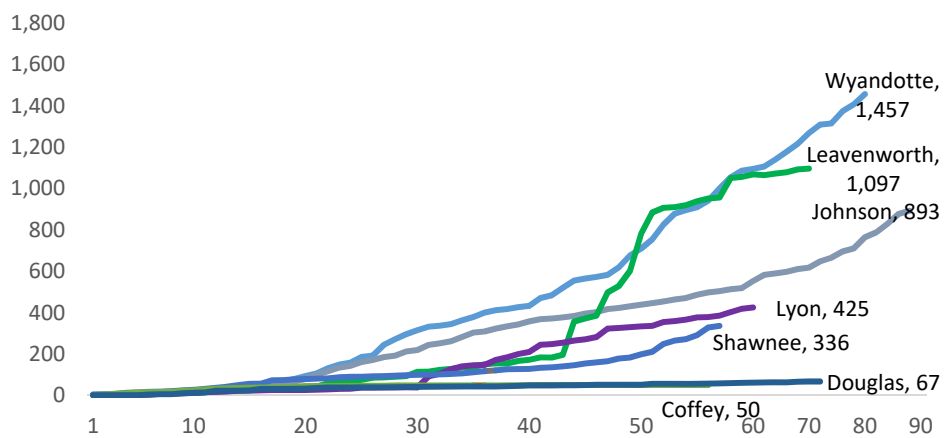
14 Day Average based on percent of region population



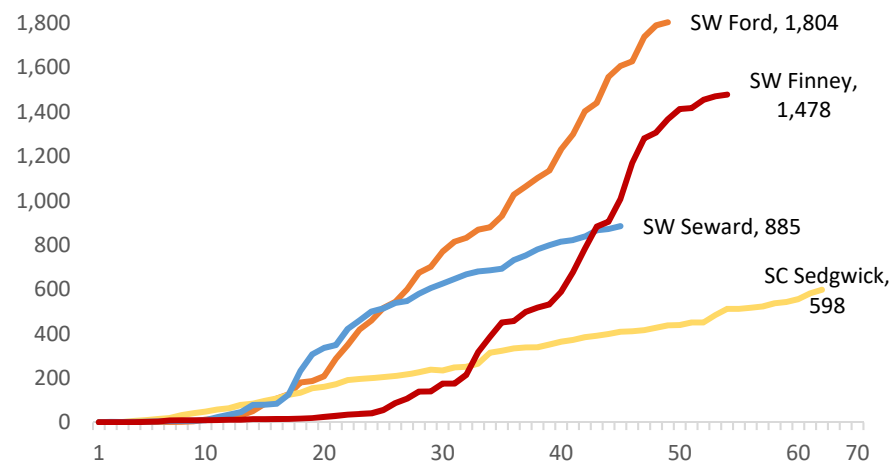
Kansas COVID-19 Cases, Hospitalizations and Deaths



Days Since First COVID Case in the County
North East Kansas Counties- June 3, 2020

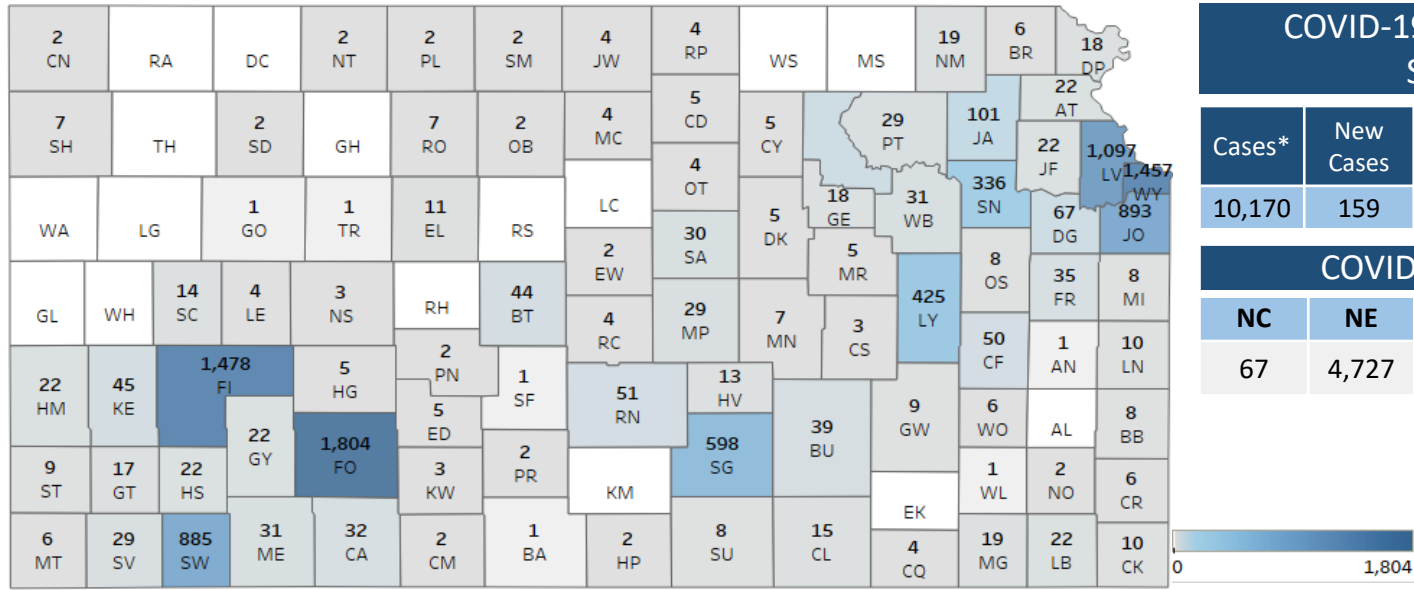


Days Since First COVID Case in the County
Other Counties with High Infection Rates June 3, 2020



Data Source: KDHE <https://www.coronavirus.kdheks.gov/160/COVID-19-in-Kansas>

COVID-19 Cases by County²



COVID-19 Kansas Statewide Case Summary – KDHE²

Cases*	New Cases	Total Hospitalizations	Statewide Deaths	Negative Tests
10,170	159	890	222	97,883

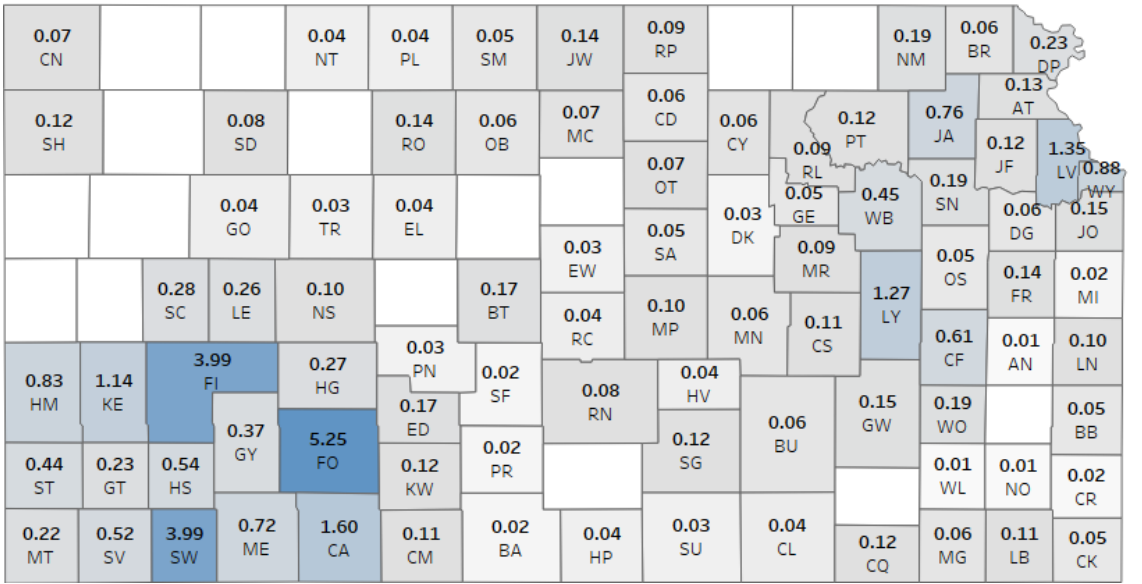
COVID-19 Cases by Region¹

NC	NE	NW	SC	SE	SW
67	4,727	38	826	87	4,425

COVID-19 Cases as a Percentage of County Population³



KS Counties with COVID-19 Cases	89
Percentage of counties with cases	85%



Notes:
 1. EMResource data updated daily – published here MWF
 2. KDHE data updated MWF
<https://www.coronavirus.kdheks.gov/160/COVID-19-in-Kansas>
 3. Combined KDHE COVID data and US Census Data